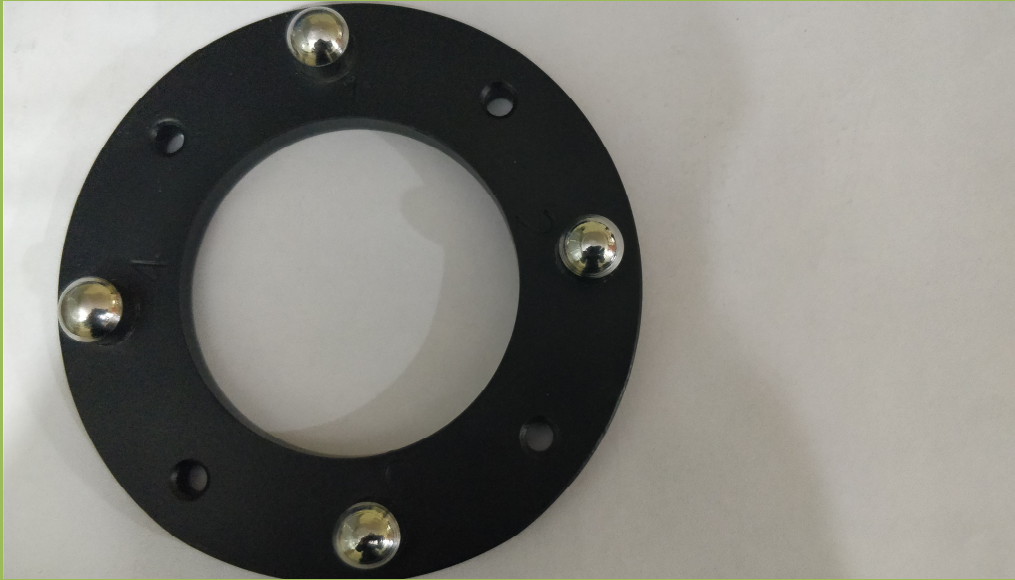




ADHAR INSTRUMENTS & SERVICES



Tilt Plate

Tilt Plate AIS-1320:

Tilt plate is used with portable tile meter for monitoring change in inclination of a structure. It is rugged in construction and free from temperature variation. Tilt plates are mounted on structure at specified locations. Tilt reading can be obtained quickly and easily by a single operator.

Applications:

- It is used in different application like buildings, Monuments, heritages, dam, tunnel, underground etc.

2016

Specifications:

Tilt Plate	
Dimensions	120mm OD, 10mm thickness, 70mm ID, Over all height 20mm
Material	Aluminium alloy
Pin	4 Pins at 90° apart
Provision for Fastening	4 holes for screw fastening